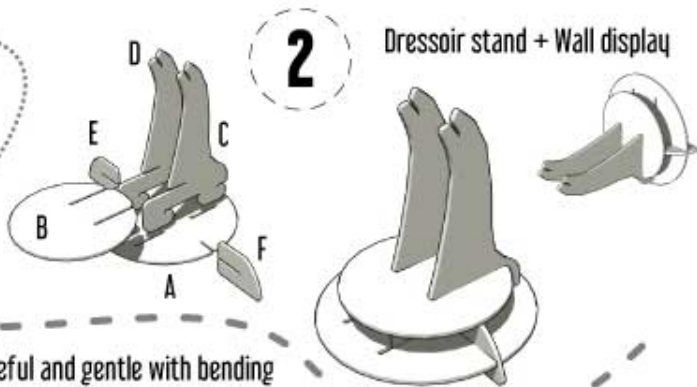
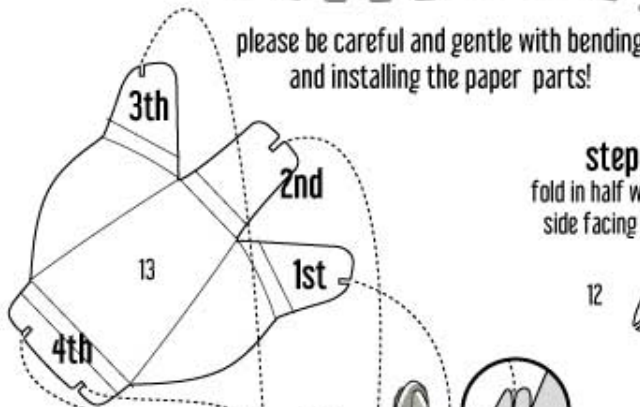


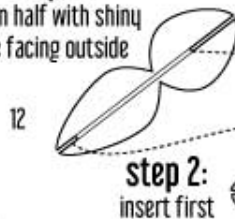
Clean hands in this stage will be very convenient for a nice final result :-)



please be careful and gentle with bending and installing the paper parts!



step 1:  
fold in half with shiny side facing outside



step 2:  
insert first



3

step 3:  
insert second

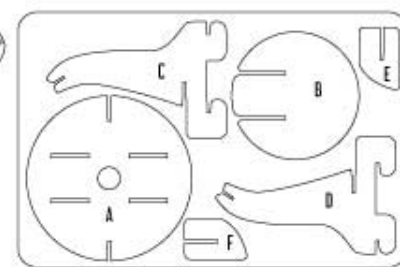


Nr. 20



# Marine life

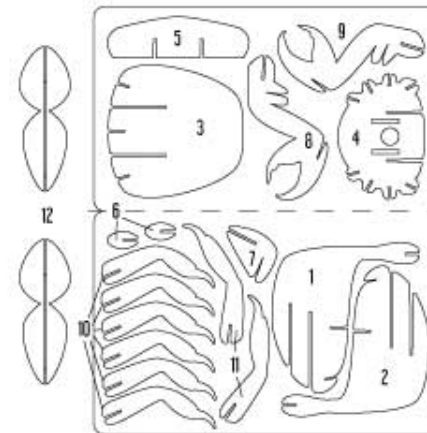
Beach crab



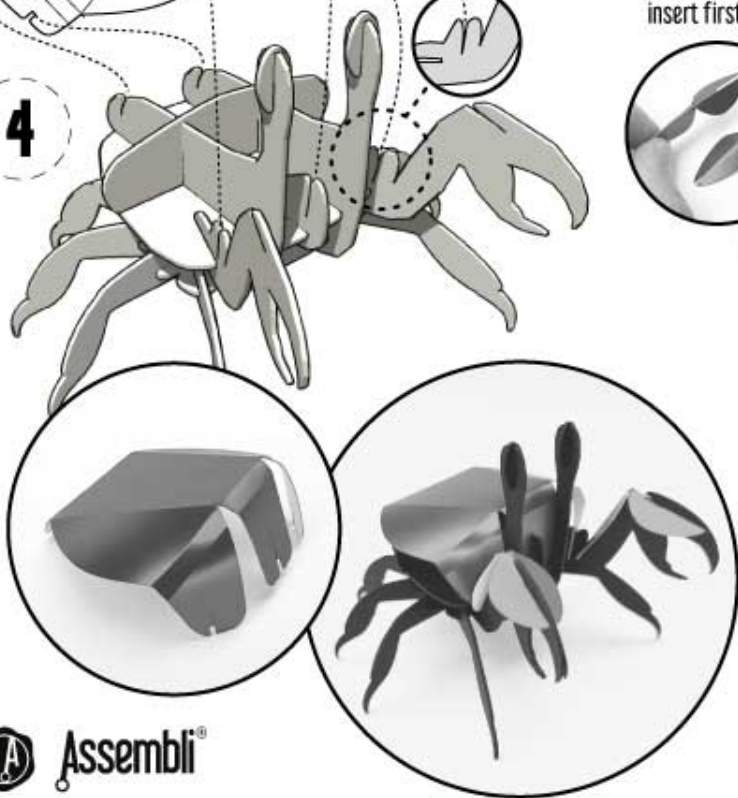
Instruction sheet Read first!

**Important!** The cardboard and paper parts are fragile so please work carefully, don't squeeze or force the parts for best result. Start with building the cardboard skeleton frames. The illustrations will lead you through the process.

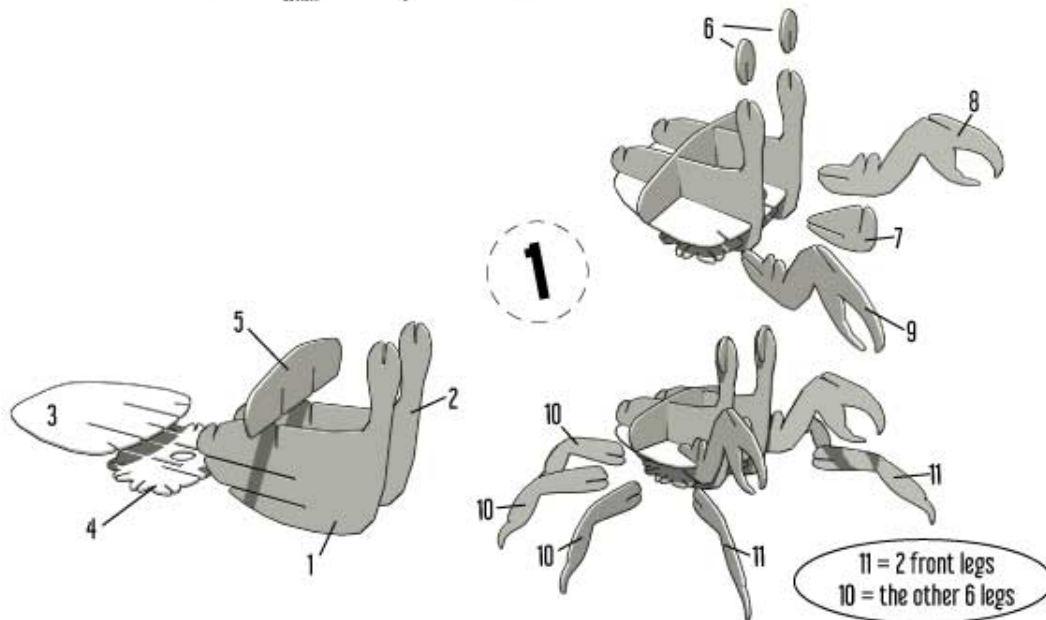
Note for the metallic paper parts: When removed, bend them only a little bit to curl the part lightly to reach the desired effect.



4



1



11 = 2 front legs  
10 = the other 6 legs

Others in the collection:

